

THE MOBRIDGE

REV10/18/12



SIMILAR TO

**Paul Fick
Homes
Incorporated**

615 TAN TARA CICLE
SIOUX FALLS SD 57108
PH: (605)371-3206
FAX: (605)371-1158
www.paulfickhomes.com

STYLE: MULTILEVEL

SQUARE FEET 1297

BASE PRICE INCLUDED:

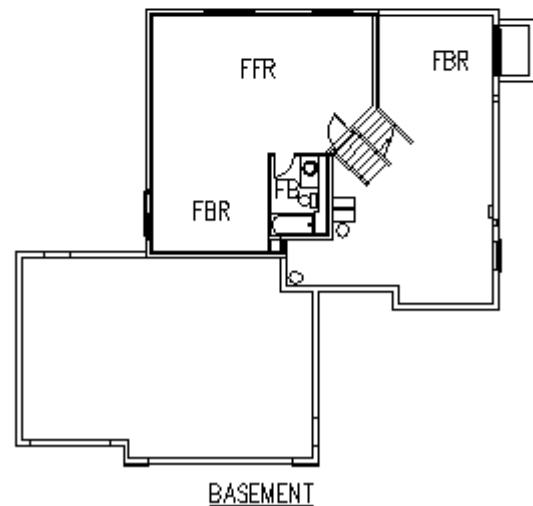
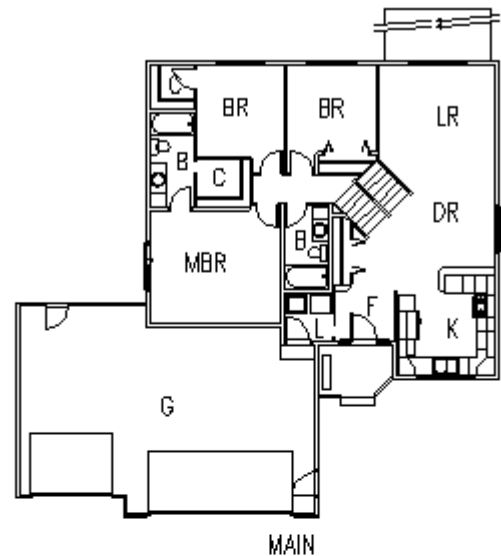
- *13 SEER AIR CONDITIONER
- *90% EFF. NATURAL GAS FURNACE
- *50 GAL. WATER HEATER (ELECTRIC)
- *2x6 SIDE WALL CONSTRUCTION
- *LP SIDING - 50 YR. WARRANTY
- *GARBAGE DISPOSAL
- *2 OUTSIDE FAUCETS
- *ROOM TO EXPAND IN LOWER LEVEL
- *OAK OR POPLAR WOODWORK THROUGHOUT
- *MAINTANCE FREE HIGH-PERFORMANCE WINDOWS
- *VAULTED CEILING
- *CEDAR DECK
- *ROUNDED CORNERS
- *R-50 INSULATION IN CEILING
- *STOVE, FRIG., DISHWASHER AND RANGEHOOD

Plans can be customized with only the cost of the feature; no change order charges!

ROOM DIMENSIONS:

KITCHEN: 11'-0" X 11'-3"
DININGROOM: 11'-6" X 10'-4"
LIVINGROOM: 13'-2" X 13'-6"
MASTER BEDROOM: 14'-11" X 12'-8"
BEDROOM #2: 10'-0" X 10'-3"
BEDROOM #3: 10'-0" X 10'-0"

(Information deemed reliable but not guaranteed)



PRICES AND AVAILABILITY SUBJECT TO CHANGE WITHOUT NOTICE

CODE: ML1297TG