

THE SALEM

REV8/15/12



STYLE: RANCH

BASE PRICE: \$ 111,000 *** (LOT NOT INCLUDED)

SQUARE FEET 864

BASE PRICE INCLUDED:

- *13 SEER AIR CONDITIONER
- *90% EFF. NATURAL GAS FURNACE
- *50 GAL. WATER HEATER (ELECTRIC)
- *2x6 SIDE WALL CONSTRUCTION
- *LP SIDING - 50 YR. WARRANTY
- *GARBAGE DISPOSAL
- *2 OUTSIDE FAUCETS
- *ROOM TO EXPAND IN LOWER LEVEL
- *OAK OR POPLAR WOODWORK THROUGHOUT
- *MAINTANCE FREE HIGH-PERFORMANCE WINDOWS
- *VAULTED CEILING
- *CEDAR DECK
- *ROUNDED CORNERS
- *R-50 INSULATION IN CEILING
- *COVERED PORCH
- *STOVE, FRIG., DISHWASHER AND RANGEHOOD
- *3% TOWARDS CLOSING COST ***
- *** Sioux Falls Market Only

Plans can be customized with only the cost of the feature; no change order charges!

ROOM DIMENSIONS:

KITCHEN: 9'-6" X 10'-0"

DININGROOM: 9'-2 X 8'-7"

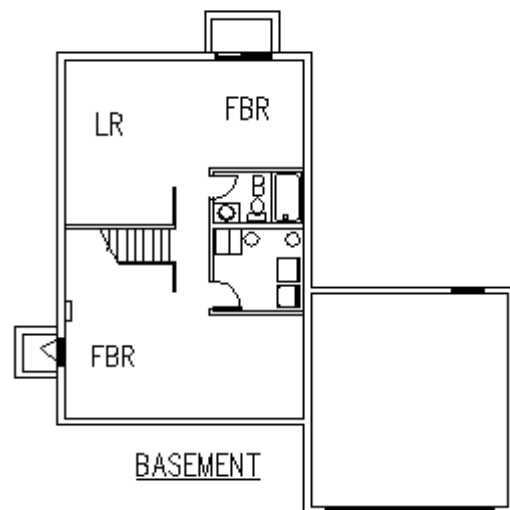
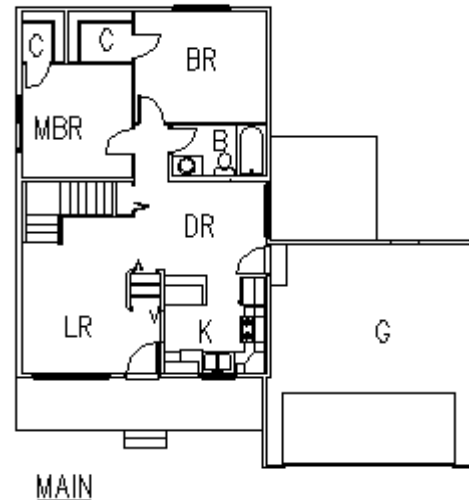
LIVINGROOM: 11'-11" X 15'-4"

MASTER BEDROOM: 12'-4" X 10'-7"

BEDROOM: 10'-4" X 11'-0"

(Information deemed reliable but not guaranteed)

PAUL FICK HOMES INC
615 TAN TARA CICLE
SIOUX FALLS SD 57108
PH: (605)371-3206
FAX: (605)371-1158
www.paulfickhomes.com



PRICES AND AVAILABILITY SUBJECT TO CHANGE WITHOUT NOTICE

CODE: R864DG-2