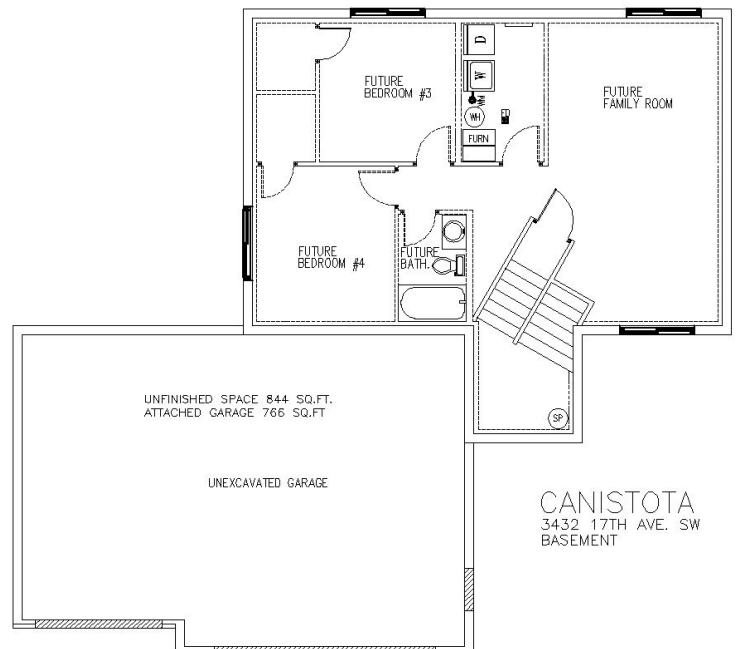
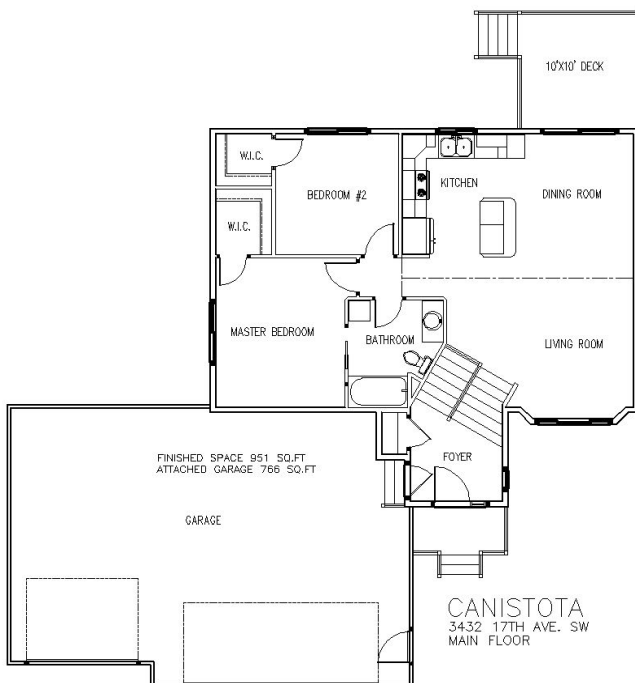




The Canistota *(similar to...)*

Split Foyer | Approx. 951 Sq. Ft. | Kitchen = 11'6" x 10'6" | Dining Room = 8'0" x 10'6" | Living Room = 16'5" x 12'8" | Master Bedroom = 10'10" x 12'7"

- 14 Seer Air Conditioner
- 95% Efficient Natural Gas Furnace
- 50 Gallon Electric Water Heater
- 2x6 Exterior Wall Construction
- 30 Year Warranty LP Smart Siding
- Garbage Disposal
- Stove, Refrigerator, Dishwasher & Range Hood
- Unfinished Basement
- Poplar Woodwork Throughout
- Maintenance Free, High-Performance Windows
- Vaulted Ceiling
- Cedar Deck



(All information deemed reliable, but not guaranteed)