

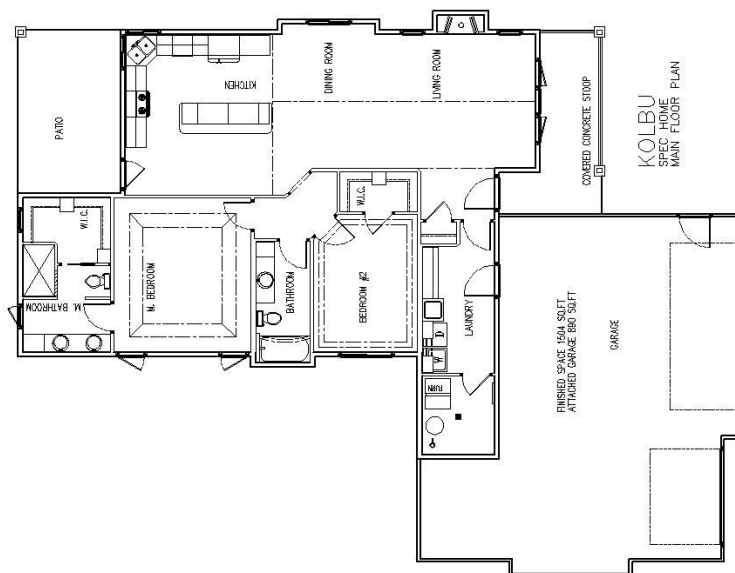


**PAUL FICK**  
CUSTOM HOMES

# The Kolbu *(similar to...)*

Villa Ranch | Approx. 1504 Sq. Ft. | Kitchen = 13'8" x 15'7" | Dining Room = 14'0" x 10'0" | Living Room = 13'4" x 15'8" | Master Bedroom = 15'0" x 13'5"

- Cozy Cottage-Inspired Exterior
- Covered Deck/Patio with Stone Column(s)
- Sod, Sprinkler, Landscape Rock, Edging, Trees & Shrubs
- Slab on Grade (option to build with basement)
- 2 or 3 Stall Garage
- Handicap Accessible
- Granite Countertops
- Hardwood Flooring
- Soft-close Custom Cabinetry
- Stove, Refrigerator, Dishwasher, Microwave Range, Washer & Dryer
- Large Master Vanity, Walk-in Tile Shower & Walk-in Closet
- 9-foot, Vaulted, Tray, Coffered and/or Racetrack Ceilings
- 95% Efficient Natural Gas Furnace
- 50-Gallon Electric Water Heater
- Part of Cherry Lake Reserve Homeowners Association
- Please, call us for more details



*(All information deemed reliable, but not guaranteed)*

(605) 371-3206 | [www.paulfickhomes.com](http://www.paulfickhomes.com) | 615 E. Tan Tara Circle, Sioux Falls, SD | [paul.fickhomes@gmail.com](mailto:paul.fickhomes@gmail.com)

Revised 01/17/19