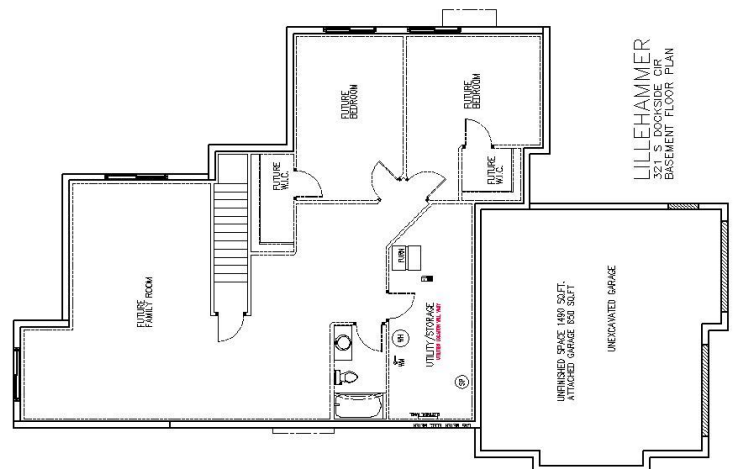
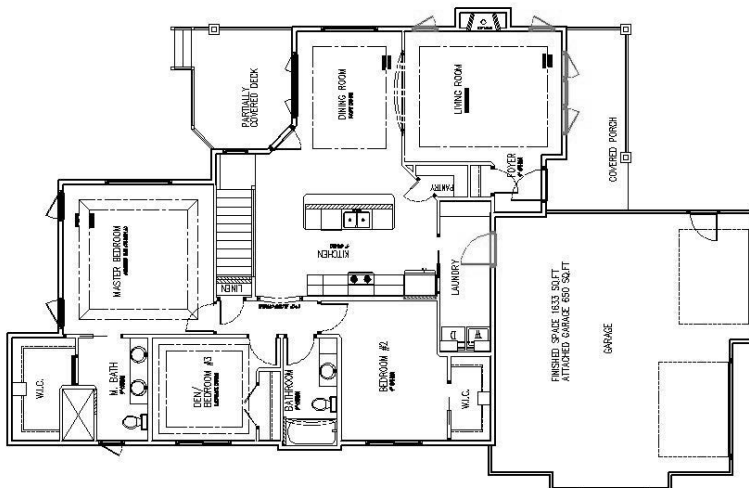




# The Lillehammer *(similar to...)*

Villa Ranch | Approx. 1633 Sq. Ft. | Kitchen = 12'6" x 12'6" | Dining Room = 13'0" x 10'3" | Living Room = 13'0" x 14'10" | Master Bedroom = 14'8" x 14'8"

- Cozy Cottage-Inspired Exterior
- Covered Deck/Patio with Stone Column(s)
- Sod, Sprinkler, Landscape Rock, Edging, Trees & Shrubs
- Slab on Grade (option to build with basement)
- 2 or 3 Stall Garage
- Handicap Accessible
- Granite Countertops
- Hardwood Flooring
- Soft-close Custom Cabinetry
- Stove, Refrigerator, Dishwasher, Microwave Range, Washer & Dryer
- Large Master Vanity, Walk-in Tile Shower & Walk-in Closet
- 9-foot, Vaulted, Tray, Coffered and/or Racetrack Ceilings
- 95% Efficient Natural Gas Furnace
- 50-Gallon Electric Water Heater
- Part of Cherry Lake Reserve Homeowners Association
- Please, call us for more details!



*(All information deemed reliable, but not guaranteed)*